

USER MANUAL

INALTO?

INALTO.HOUSE

# 7kg/4kg Combo Washer Dryer

MODEL CODE/S  
IFLW7D40



FOR ALL AUSTRALIAN HOMES

V 1.0 | 0422

Welcome

Residentia Group Pty Ltd  
ACN. 600 546 656  
165 Barkly Avenue  
Burnley, Victoria 3121  
Australia

—  
Applico Ltd  
635 Great South Road  
Penrose, Auckland 1061  
New Zealand

—  
InAlto  
www.inalto.house  
f /inalto.house  
i /inalto.house

## Congratulations on purchasing your new InAlto Combo Washer Dryer!

The InAlto brand is proudly distributed within Australia by Residentia Group Pty Ltd and within New Zealand by Applico Ltd.

Please refer to the warranty card at the rear of this manual for information regarding your product's parts and labour warranty, or visit online at:

- [www.residentia.group](http://www.residentia.group)
- [www.applico.co.nz](http://www.applico.co.nz)
- [www.inalto.house](http://www.inalto.house)

Both Residentia Group & Applico are customer obsessed and our Support Teams are there to ensure you get the most out of your appliance. Should you want to learn more about recommended usage, the various features of your appliance, and importantly taking care of the unit when cleaning, our Support Teams are here to help.

Telephone Contacts:

- AU: 1300 11 4357
- NZ: 0800 763 448

It is important that you read through the following use and care manual thoroughly to familiarise yourself with the installation and operation requirements of your appliance to ensure optimum performance.

Again, thank you for choosing an InAlto appliance and we look forward to being of service to you.

SCAN ME



---

**Scan to Register your InAlto Appliance** or go to:

- AU: [www.inalto.house/registration](http://www.inalto.house/registration)
- NZ: [www.inalto.house/nz/registration](http://www.inalto.house/nz/registration)

By registering your product, you will receive advanced support, stay updated with the latest from InAlto and find out about new products and promotions.

## Contents

- [2 Welcome](#)
- [4 Safety Instructions](#)
- [7 Your Combo Washer Dryer](#)
- [8 Installation](#)
- [10 Control Panel](#)
- [11 Operating Instructions](#)
- [17 Cleaning & Maintenance](#)
- [19 Technical Specifications](#)
- [20 Troubleshooting](#)
- [22 Purchase Details](#)
- [23 Your Receipt](#)
- [24 Warranty Information](#)

## Customer Care

---

InAlto recommends the use of original spare parts. When contacting our customer service team on 1300 11 4357, please ensure that you have the following information at hand (which can be found on your appliances' rating plate).

- Model Number
- Serial Number

# Safety Instructions

## **IMPORTANT!**

Please read the following safety information thoroughly and follow it strictly to minimise the risk of fire or explosion, electric shock and to prevent property damage, personal injury or loss of life. Failing to follow these instructions shall void any warranty.

Explanation of the following signal words:

## **WARNING!**

This signal word indicates a potentially dangerous situation which may result in death or serious injuries unless it's avoided.

## **CAUTION!**

This signal word indicates a potentially dangerous situation which may result in slight or minor injuries or damage to property and the environment.

## **NOTE!**

This signal word indicates a potentially dangerous situation which may result in slight or minor injuries.

## **INTENDED USE**

- The product is intended only for home use and for textiles in household amounts suitable for machine washing and drying. This appliance is for indoor use only and not intended for built in use.
- Only use according to these instructions. The appliance is not intended for commercial use.
- Any other use is considered as improper use. The producer is not responsible for any damage or injuries that may result of it.
- This appliance is intended to be used in household and similar applications such as:
  - Staff kitchen areas in shops, offices and other working environments;
  - Farm houses;
  - By clients in hotels, motels and other residential type environments;
  - Bed and breakfast type environments;
  - Areas for communal use in blocks of flats or in laundrettes.

## **WARNING! ELECTRIC SHOCK HAZARD**

- If the supply cord is damaged, it must be replaced by a special cord or assembly available from the manufacturer or its service agent.
- If the machine is damaged, it must not be operated unless repaired by the manufacturer, its service agent or similarly qualified persons.
- Risk of electric shock!

## **CAUTION: RISK TO CHILDREN!**

- This appliance is not intended for use by persons (including children) with reduced physical, sensory or mental capabilities, or lack of experience and knowledge, unless they have been given supervision or instruction concerning use of the appliance by a person responsible for their safety.
- Children should be supervised to ensure that they do not play with the appliance.
- Children 3 years and under shall be kept away from the appliance or continuously supervised.
- Animals and children may climb into the machine. Check the machine before every operation.
- Do not climb or sit on the appliance.
- The glass door may become very hot during the operation. Keep children and pets far away from the machine while it is operating.

## **INSTALLATION POSITIONING**

- All washing and additional substances are to be kept in a safe place out of the reach of children.
- Do not install the machine on a carpet floor.
- Keep the appliance clear from heating sources and direct sunlight to avoid damage to parts.
- Do not use the appliance in humid environments or rooms containing explosive or caustic gas. In case of water leakage or water splashes let the appliance dry in the open air.
- The appliance must not be installed behind a lockable door, a sliding door or a door with a hinge on the opposite side to that of the washer dryer, in a way that a full opening of the appliance door is restricted.
- Do not operate the machine in rooms with a temperature of below 5°C. This can cause damages to parts of it. If it is unavoidable, make sure to drain the water completely from the appliance after every use to avoid damages caused by frost.
- Never use flammable sprays or substances in the immediate proximity of the appliance.

## **INSTALLATION**

- The maximum inlet water pressure: 1.0Mpa.
- The minimum inlet water pressure: 0.05Mpa.
- Remove all packaging material and transport bolts before using the appliance. Otherwise, serious damage may occur.
- This appliance is equipped with a single inlet valve and can be connected to the cold water supply only.
- Mains plug must be accessible after installation.
- Before washing clothes for the first time, the product shall be operated once throughout all the procedures without any clothes inside.
- Do not put any excessively heavy objects on the appliance, like water containers or heating devices.
- The new hose-sets supplied with the appliance are to be used and old hose-sets should not be reused.

---

## ELECTRICAL CONNECTION

- Make sure the supply cable is not trapped by the machine, as it could get damaged.
- Connect the product to a grounded outlet protected by a fuse complying with the values in the "Technical specifications" table.
- The grounding installation has to be made by a qualified electrician.
- Ensure that the machine is installed in accordance with the local regulations.
- Water and electrical connections must be carried out by a qualified technician in accordance with the manufacturer's instructions and local safety regulations.

## WARNING!

- Don't use multiple plugs or extension cords.
- The appliance must not be supplied through an external switching device, such as a timer, or connected to a circuit that is regularly switched on and off by a utility.
- Do not pull the plug out of the mains outlet if there is flammable gas around.
- Never pull out power plug with wet hands.
- Always pull at the plug, not at the cable.
- Always unplug the appliance if it is not being used.

## WATER CONNECTION

- Check the connections of the water inlet tubes, the water tap and the outlet hose for possible problems due to changes of water pressure. If the connections loosen or leak close the water tap and get it repaired.
- Do not use the appliance before the pipes and hoses are installed properly by qualified persons.
- The water inlet and outlet hoses have to be safely installed and remain undamaged. Otherwise, water leakage can occur.
- Do not remove the drain pump filter while there is still water in the appliance. Big quantities of water can leak out, and there is a risk of scalding due to hot water.

## OPERATION AND MAINTENANCE

- Never use any flammable, explosive or toxic solvents. Do not use gasoline and alcohol etc. as detergents. Only select detergents that are suitable for machine washing.
- Make sure that all pockets are emptied. Sharp and rigid items such as coins, brooches, nails, screws, stones etc. may cause serious damages to this machine.
- Remove all objects from pockets such as lighters and matches before use the appliance.
- Do not dry unwashed items in the appliance.
- Items that have been soiled with substances such as cooking oil, acetone, alcohol, petrol, kerosene, spot removers, turpentine, waxes and wax removers should be washed in hot water with an extra amount of detergent before being dried in the appliance.
- Items such as foam rubber (latex foam), shower caps, waterproof textiles, rubber backed articles and clothes or pillows fitted with foam rubber pads should not be dried in the appliance.
- Fabric softeners, or similar products, should be used as specified by the fabric softener instructions.
- Fill steam generators only with liquids specified by the manufacturer.
- Oil-affected items can ignite spontaneously, especially when exposed to heat sources such as in a washer dryer. The items become warm, causing an oxidation reaction in the oil. Oxidation creates heat. If the heat cannot escape, the items can become hot enough to catch fire. Piling, stacking or storing oil-affected items can prevent heat from escaping and so create a fire hazard.
- If it is unavoidable that fabrics that contain vegetable or cooking oil or have been contaminated by hair care products be placed in the washer dryer they should first be washed in hot water with extra detergent - this will reduce, but not eliminate, the hazard.
- Never try to open the door forcefully. The door will unlock shortly after the end of a cycle.
- Please do not close the door with excessive force. If it is found difficult to close the door, please check if the clothes are properly inserted and distributed.
- Lint must not to be allowed to accumulate around the appliance.
- Always unplug the appliance and close the water tap before cleaning and maintenance and after each use.
- Never pour water over the appliance for cleaning purpose. Risk of electric shock!
- Repairs shall only be carried out by the manufacturer, its service agent or similarly qualified persons in order to avoid a hazard. The producer will not be responsible for damages caused by the intervention of not authorized persons.

# Safety Instructions (Cont.)

---

## **BEFORE TRANSPORT:**

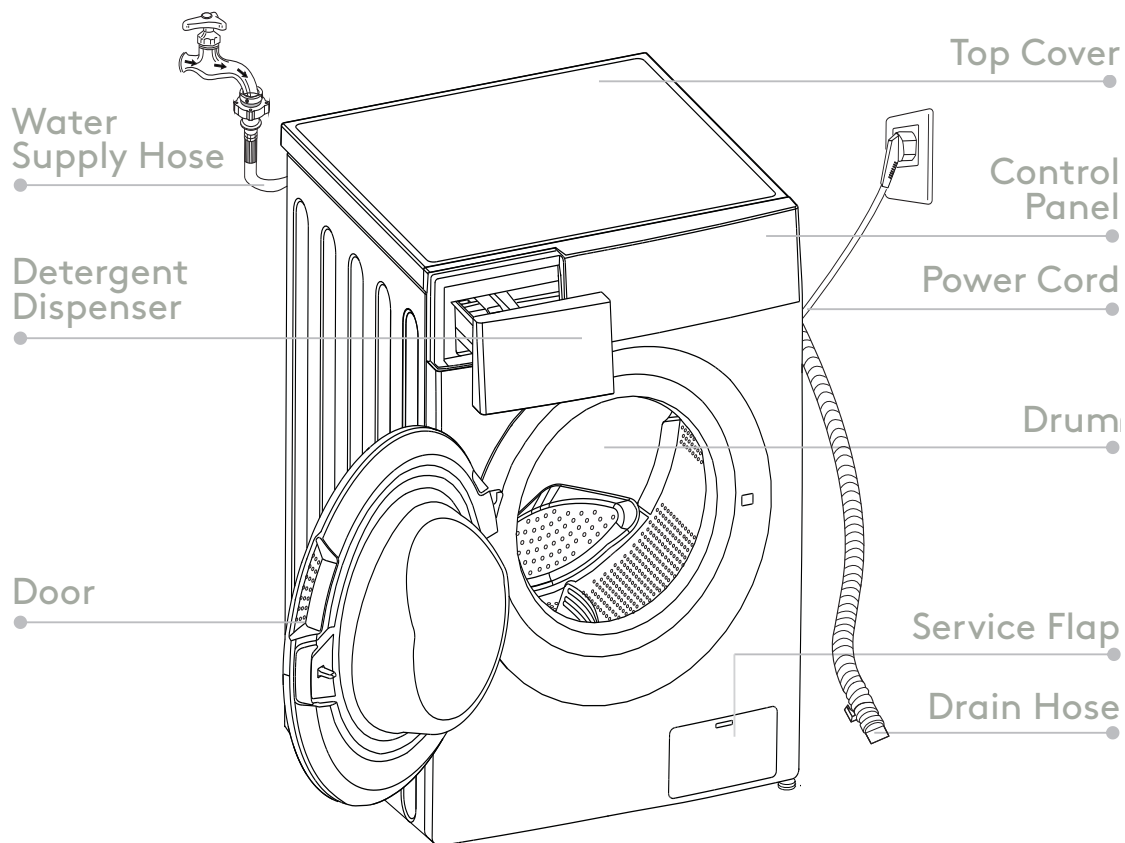
- Transport bolts shall be reinstalled to the machine by a specialised person.
- Accumulated water shall be drained out of the machine.
- This appliance is heavy. Transport with care. Never hold any protruding part of the machine when lifting. The machine door cannot be used as a handle.

## **DISPOSAL OF PACKAGING**

- The packaging is designed to protect the appliance from damage during transportation. The packaging materials are environmentally friendly and should be recycled. Recycling the packaging can reduce the use of raw materials in the manufacturing process and the amount of waste in landfill sites.

# Your Combo Washer Dryer

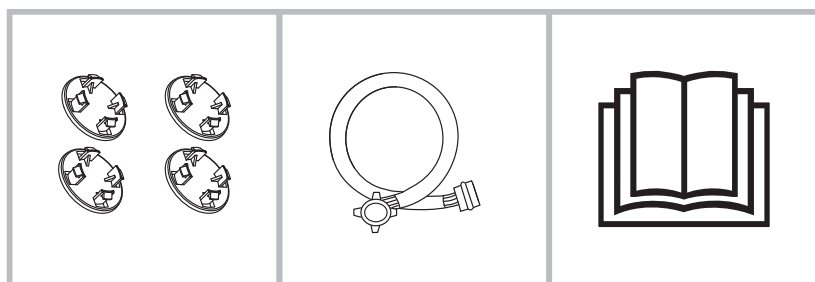
IFLW7D40



**NOTE!**

The images in this user manual are for reference only. Your appliance may appear differently.

**ACCESSORIES**



4 x Cover Caps

1 x Cold Water Supply Hose

User Manual

# Installation

---

## **IMPORTANT!**

If the power cord is damaged, it must be replaced by Residentia Group or one of its authorised service representatives. Please contact 1300 11 HELP (4357) and ensure the appliance is completely disconnected from the power supply.

## **TRANSPORT**

Move cautiously. Do not grasp any salient parts of machine. The machine door cannot be used as the handle for transport.

If the appliance can't be transported upright the unit can be tilted at an angle no less than 30°.

Risk of injury and damage! Improper handling of the appliance may result in injury.

- The appliance is very heavy. Never transport or carry the appliance alone; always with the assistance of another person.
- Remove all obstacles on the transport route and from the installation location, e.g. open doors and clear away objects lying on the floor.
- Do not use the open door as a handhold.
- Remove all package material before using the appliance.
- Before setting up the washer dryer, check it for any externally visible damage. Do not install or use a damaged unit.
- Do not install the unit in a room where there is a risk of frost occurring. At temperatures around freezing point the unit may not be able to operate properly. There is a risk of damage if the condensed water is allowed to freeze in the pump and hoses.

## **INSTALLATION POSITIONING**

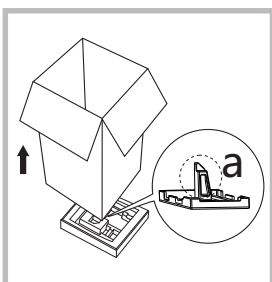
Ensure that the installation position adheres to the following conditions;

1. Rigid, dry, and level surface
2. Avoid direct sunlight
3. Sufficient ventilation
4. Room temperature is above 5°C
5. Keep far away from the heat sources such as coal or gas burning appliances

## **UNPACKING YOUR WASHER DRYER**

**WARNING!** Packaging material (e.g. Films, Styrofoam) can be dangerous for children. There is a risk of suffocation! Keep all packaging well away from children.

1. Remove the cardboard box and styrofoam packing.
2. Lift the washer dryer and remove the base packaging. Make sure the small triangle foam (a) is removed with the bottom packaging together. If not, lay the unit down on the side surface and remove it manually.



3. Remove the tape securing the power supply cord and drain hose.
4. Remove the inlet hose from the drum.

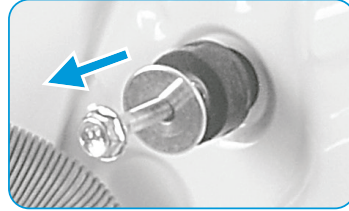


## REMOVING TRANSPORT BOLTS

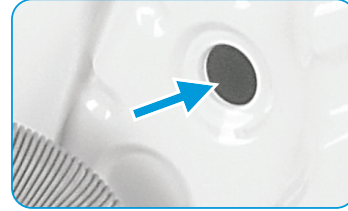
**WARNING!** You must remove the transport bolts from the backside before using the product.



Loosen the 4 transport bolts with a spanner.



Remove the bolts including the rubber parts (keep them in a safe place for future use).

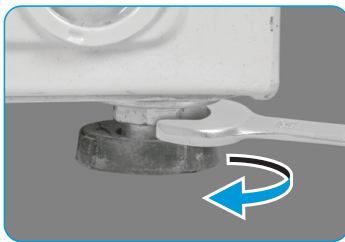


Close the holes using the cover caps.

## LEVELING THE WASHER DRYER

**WARNING!** The lock nuts on all four feet must be screwed tightly against the housing.

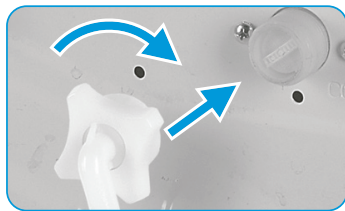
1. Loosen the lock nut.
2. Turn the foot until it reaches the floor.
3. Adjust the legs and lock the nuts with a spanner. Make sure the machine is level and steady.



## CONNECTING THE WATER SUPPLY HOSE

To prevent leakage or water damage, ensure you follow the instructions below;

- Do not kink, crush or modify water inlet hose.
- Connect the water supply hose to the water inlet valve and a water tap with cold water as indicated.



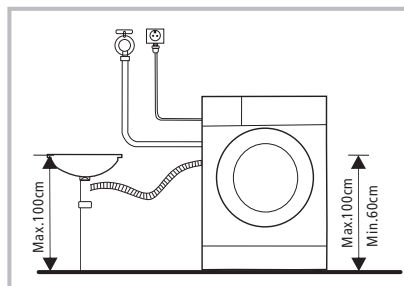
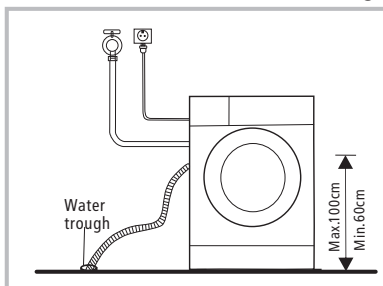
**NOTE!** Connect manually, do not use tools. Check if the connections are tight.

## DRAIN HOSE

- Do not kink or protract the drain hose.
- Position drain hose properly, otherwise damage might result of water leakage.

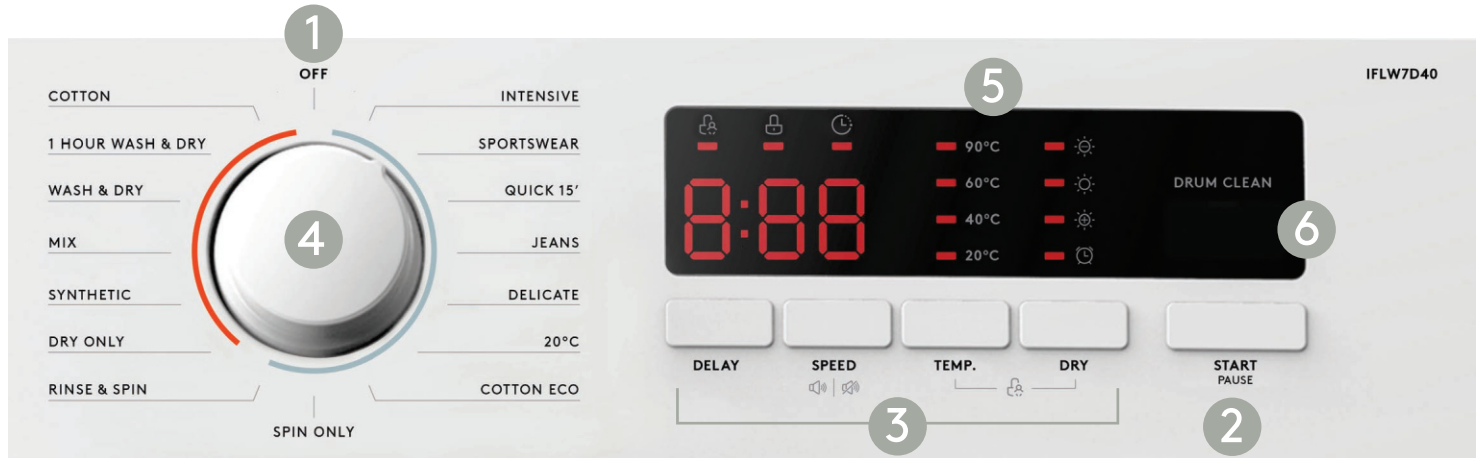
There are two ways to place the end of drain hose

1. Put it into the water trough.
2. Connect it to the branch drain pipe of the trough.



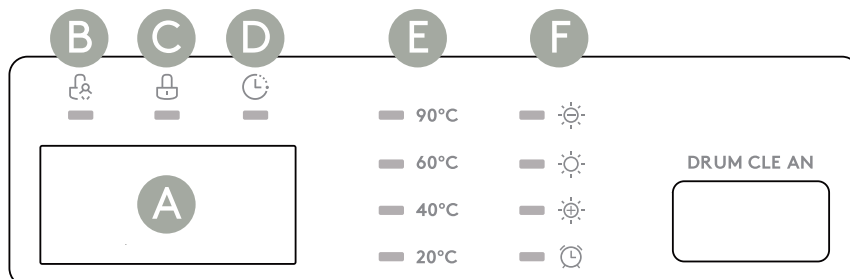
# Control Panel

## YOUR CONTROL PANEL



1. On/Off
2. Start/Pause
3. Additional Function Buttons
4. Program Control Knob
5. LED Display Screen
6. Drum Clean Button

## DISPLAY SCREEN SYMBOLS



### A. Display Screen

Wash Time	Delay Time
1:25	2H
Speed	Error Message
100	E30
Program End	
END	

- B. Child Lock indicator
- C. Door Lock indicator
- D. Delay indicator
- E. Temperature indicator
- F. Dryness level indicator

# Operating Instructions

## BEFORE FIRST USE

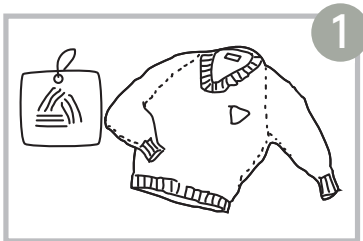
Leave your unit to stand for 2 hours after transporting.

## CAUTION!

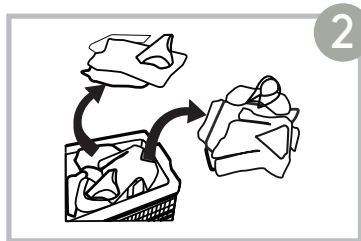
- Before washing, please make sure the washer dryer is installed properly.
- Your appliance was thoroughly checked before it left the factory. To remove any residual water and to neutralize potential odors, it's recommended to clean your appliance before first use. For this reason, start the Cotton program at 90°C without laundry and detergent.

## BEFORE WASHING

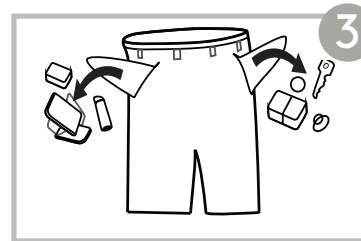
- The ambient temperature of the washer dryer should be 5-40°C. If used under 0°C, the inlet valve and draining system may be damaged. If the machine is installed under freezing conditions, it should be transferred to normal ambient temperature to ensure the water supply hose and drain hose can unfreeze before use.
- Please check your laundry care labels and the detergent use instructions before wash. Use non-foaming detergent suitable for machine washing.



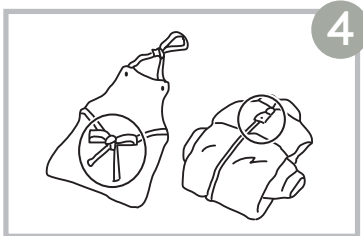
Check the care label



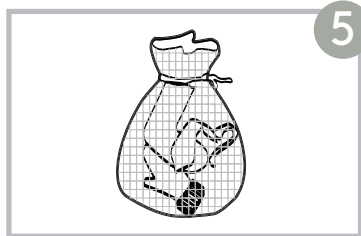
Sort laundry by colour and textile type



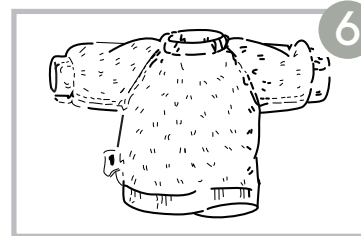
Remove all items from pockets



Tie together long textile strips/belts and close zips and buttons



Place small items into a laundry bag



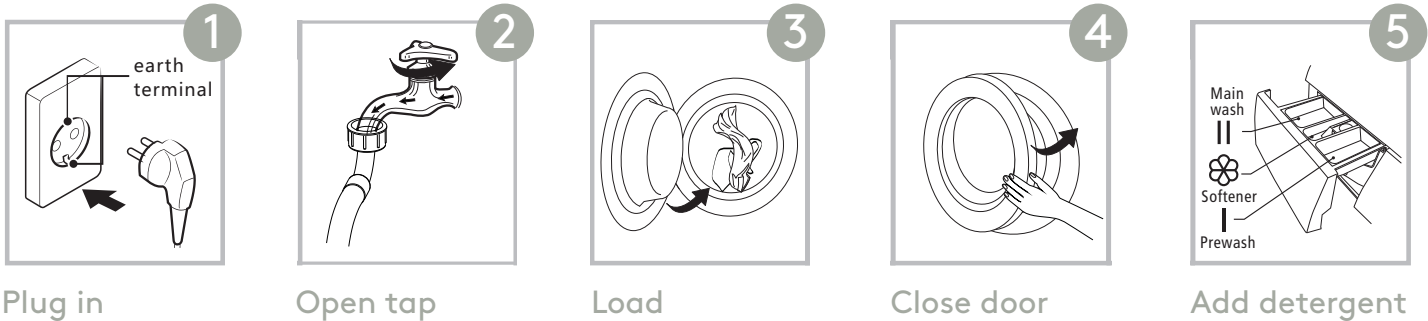
Turn items prone to pilling or long-pile fabric inside out

## WARNING!

- Do not wash or dry articles that have been cleaned in, washed in, soaked in, or dabbed with combustible or explosive substances like wax, oil, paint, gasoline, alcohol, kerosene, and other flammable materials.
- Washing single clothes items may easily create big eccentricity and cause alarm due to unbalance. Therefore it is suggested to add one or two more laundry items to the wash so that spin can be done smoothly.

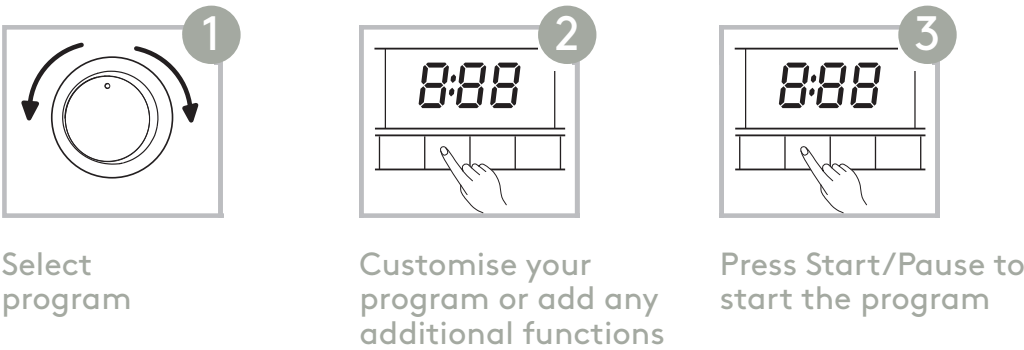
# Operating Instructions (Cont.)

## STARTING A WASHING/DRYING PROGRAM



**NOTE!** Detergent need to be added in Compartment I if the pre-wash function is selected.

## SETTING YOUR WASHING/DRYING SETTINGS

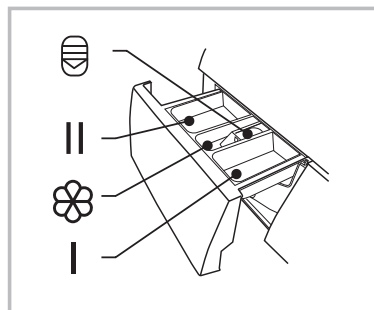


## AFTER WASHING/DRYING

The buzzer will sound and 'End' will show on the display screen.

## DETERGENT DISPENSER

- I Pre wash Compartment
- II Main wash Compartment
- ☼ Softener Compartment
- ⊖ Release button to pull out the dispenser



**CAUTION!** Detergent only need to be added in "Compartment I" after selecting pre-wash function.

Program	I	II	☼	Program	I	II	☼
Sportswear	●	○	○	*Dry Only			
Quick 15'	●	○	○	*Synthetic	●		○
Jeans	●	○	○	*Mix	●		○
Delicate	●	○	○	*1 Hour Wash & Dry	●		○
Spin Only				*Cotton	●		○
Rinse & Spin			○	*Wash & Dry	●		○
Cotton ECO	●	○	○	Intensive	●		○
20°C	●	○	○				

● Required ○ Optional

\*Denotes a function that includes drying or drying option.

---

## WASHING/DRYING PROGRAMS

### **Intensive**

For especially dirty clothes the washing intensity is increased for a more thorough wash.

### **Sportswear**

A wash cycle perfect for washing activewear.

### **Quick 15'**

A short 15 minute wash cycle that is perfect for washing small amounts of lightly soiled clothing.

### **Jeans**

A wash cycle perfect for washing denim clothing.

### **Delicate**

A washing program suitable for delicate, washable textiles, e.g. silk, satin, synthetic fibres or blended fabrics.

### **20°C**

A cold wash cycle that is suitable for washing brightly colored clothes, as it protects the colours better.

### **Cotton ECO**

A wash cycle perfect for lightly soiled clothing operating at 40°C, reducing your impact.

### **Spin Only**

A spin only cycle that is suitable for removing any excess moisture from your laundry with the option to select the spin speed.

### **Rinse & Spin**

Provides an extra rinse for your washing load and then spins it to ensure all excess moisture is removed from your clothing.

### **\* Dry Only**

Select this program to run a dry only cycle. You can select the temperature and the drying time will run according to the load.

### **\* Synthetic**

Suitable for washing synthetic clothing items such as shirts or coats. Drying is an option at the end of this cycle.

### **\* Mix**

Suitable for washing a mixed clothing of cotton or synthetics. Drying is an option at the end of this cycle.

### **\* Wash & Dry**

The standard program to provide a wash and dry for your clothing load.

### **\* 1 Hour Wash & Dry**

A shorter 1 hour cycle for washing and drying a small amount of lightly soiled clothing.

### **\* Cotton**

Suitable for washing cotton or similar heat-resistant textiles made of cotton and synthetics. Drying is an option at the end of this cycle.

### **Drum Clean**

A dedicated cycle to clean the inside of your washing/drying drum. Operating at a high temperature of 90°C to sterilise the drum. When this program is performed, the drum must be empty. Add a chlorine bleaching agent to enhance the cleaning effect. This program can be used as often as desired when required.

\*Denotes a function that includes drying or drying option.

# Operating Instructions (Cont.)

## USING THE ADDITIONAL FUNCTIONS

### DELAY FUNCTION

This function is used for delaying the start of the drying program up to 24 hours. When the delayed program starts, the time starts to countdown on the display and the delay icon blinks.

1. Load your laundry and make sure the machine door is closed.
2. Press the *On/Off* button, then use the program selector knob to select the desired program.
3. Press the *Delay* button to select the desired delay time.
4. Then press the *Start/Pause* button and the appliance will be in standby and the delay time will start counting down. The drying procedure will be automatically performed when the delay time is over.

To cancel the Delay function, press the "Delay" button before starting the program until the display shows 0h. If the program has already started, switch the appliance off and afterwards on and select a new program.

### SPIN SPEED

When needed, the spin speed can be adjusted pressing the *Speed* button to cycle through the options in the following order: 0-400-600-800-1000-1200-1400.

### TEMPERATURE

When needed, the washing temperature can be adjusted by pressing the temperature button to cycle through the options in the following order: Cold - 20°C - 40°C - 60°C - 90°C.

### MUTING THE BUZZER

Follow the step below to mute the machine buzzer so there will be no sound once your program has ended. Once your desired program is set press the *Speed* button for 3 seconds to mute the buzzer. To turn the buzzer back on hold the *Speed* button for 3 seconds again.

### DRY LEVEL

Press the Dry button continuously to choose the dryness level of your drying cycle. It will cycle through the options in the following order; Soft Dry - Extra Dry - Normal Dry - Timer Dry.

- ☼ Soft Dry: For clothing that you require to be moderately dry.
- ☼ Extra Dry: For clothing that you require to be completely dry.
- ☼ Normal Dry: The normal dry procedure.
- 🕒 Timer Dry: Choose this function to dry clothes for a specific time.

### NOTE: Drying hints

- To ensure a quality dry ensure you separate textiles according to their drying requirements.
- If you want to iron the clothes after drying, ensure they are completely dry.

### NOTE: Clothes not suitable for drying

- Particularly delicate items such as synthetic curtains, wool, silk, clothes with metal inserts, nylon stockings, bulky clothes, such as bedcovers, quilts, sleeping bags and duvets must not be dried.
- Clothes padded with foam-rubber or similar materials must not be machine dried.
- Fabrics containing residue of any lotions or hair sprays, nail solvents or similar solutions must not be machine dried in order to avoid the formation of harmful vapours.

### CHILD LOCK

This machine incorporates a special child safety lock, which can prevent children from carelessly pressing buttons and doing damage to themselves or the appliance.

1. When the drying cycle is running, press the *Anti-Crease* button at the same time for 3 seconds to start the child lock function.
2. When child lock function is set, the display will show Child lock icon and all button are deactivated, except the *On/Off* button.
3. To deactivate the child lock function, the *Anti-Crease* button shall be pressed at the same time for 3 seconds.

---

## USING THE ADDITIONAL FUNCTIONS (CONT.)

### CHILD LOCK

This machine incorporates a special child safety lock, which can prevent children from carelessly pressing buttons and doing damage to themselves or the appliance.

- Press the *Temp* and *Dry* button at the same time for 3 seconds to activate the child lock.

### CAUTION!

When the Child Lock is activated, the display will alternately show "CL" and the remaining time.

Pressing any other button will cause the Child Lock indicator to flash for 3 sec. When the program ends, "CL" and "END" will alternate on the display for 10 sec, then the indicator will flash for 3 sec.

The Child Lock deactivates the function of all buttons except the Child lock button!

Only the simultaneous pressing of the two buttons *Temp* and *Dry* can deactivate the Child Lock!

Please deactivate the Child Lock before selecting a new program!

### DRUM CLEAN

The machine will alert you that it is time to run a Drum Clean cycle by flashing the drum clean light after every 25 cycles.

To start counting down again;

- Press and hold the Drum Clean button for 3 seconds, the Drum Clean reminder will turn off and the machine will recount another 25 cycles.
- Alternatively, the counted cycles will be recounted once a drum clean program is finished.

# Operating Instructions (Cont.)

**WASHING/DRYING PROGRAMS TABLE**

PROGRAM	LOAD (KG)	DISPLAY TIME	DEFAULT TEMP. (°C)	DEFAULT SPIN SPEED (RPM)	ADDITIONAL FUNCTIONS
Intensive	7.0	3:48	40	800	Delay
Sportswear	3.5	0:45	20	800	Delay
Quick 15'	2.0	0:15	Cold	800	Delay
Jeans	7.0	1:32	20	800	Delay
Delicate	2.5	0:49	20	800	Delay
20°C	3.5	1:01	20	1000	Delay
Cotton ECO	7.0	0:59	20	1000	Delay
Spin Only	7.0	0:12	-	1000	Delay
Rinse & Spin	7.0	0:20	-	1000	Delay
*Dry Only	4.0	4:14	-	1400	Delay
*Synthetic	3.5/3.5	1:28	40	800	Delay
*Mix	7.0/4.0	0:58	40	1000	Delay
*Wash & Dry	3.5	5:24	40	1400	Delay
* 1 Hour Wash & Dry	1.0	0:58	Cold	-	Delay
*Cotton	7.0/4.0	1:28	40	1000	Delay
Drum Clean	-	1:18	90	-	Delay

\*Denotes a function that includes drying or the option to dry

## TESTING NOTES

Energy test program: Cotton ECO, 60°C

Speed: the highest speed; Other as the default.

Half load for 7.0kg machine: 3.5kg.

"Cotton ECO, 60°C " is the standard washing programs to which the information in the label and the fiche relates, and they are suitable to clean normally soiled cotton laundry and that they are the most efficient programs in terms of combined energy and water consumptions for washing that type of cotton laundry, that the actual water temperature may differ from the declared cycle temperature.

*The parameters in this table are only for user's reference.*

*The actual parameters may be different to those in the table above.*



# Cleaning & Maintenance

## CLEANING AND CARE

**WARNING!** Always unplug the appliance and close the water tap before cleaning and maintenance.

### CLEANING THE CABINET

Proper maintenance on the washing machine can extend its working life. The surface can be cleaned with diluted non-abrasive neutral detergents when necessary. If there is any water overflow, use a cloth to wipe it off immediately. Never use sharp items to clean the appliance.

**CAUTION!** Never use abrasive or caustic agents, acid or its diluted solvents or similar substances, like alcohol or chemical products.

### CLEANING THE DRUM

Any rust stains left inside the drum by metal articles must be removed immediately using chlorine-free detergents. Never use steel wool for cleaning the drum!

**NOTE!** Keep any laundry away from the machine while cleaning the drum.

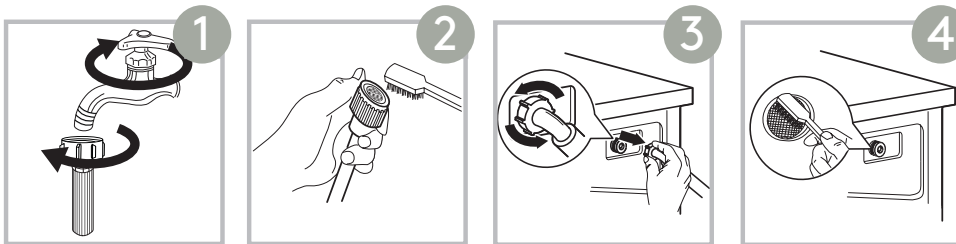
### CLEANING THE DOOR SEAL AND GLASS

Wipe the glass and seal after each wash to remove lint and stains. If lint builds up it can cause leakages. Remove any coins, buttons and other objects from the seal after each wash. Clean the Door Seal and Glass every month to ensure the normal operation of the appliance.

### CLEANING THE INLET FILTER

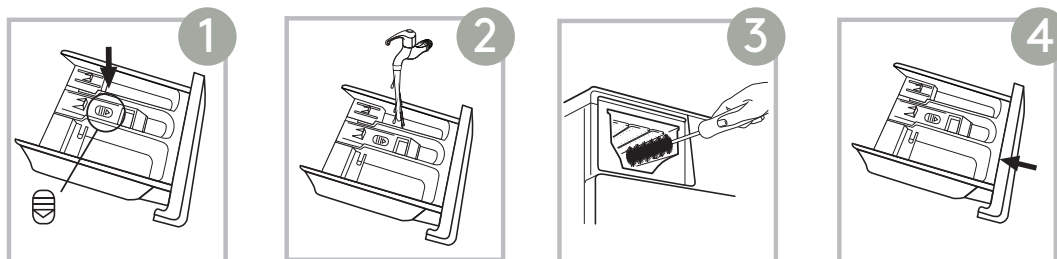
**NOTE!** Diminishing water flow is a sign that the filter needs to be cleaned.

1. Close the tap and remove the water supply hose from it.
2. Clean the filter with a brush.
3. Unscrew the water supply hose from the backside of the machine. Pull out the filter with long pliers.
4. Use a brush to clean the filter.
5. Reinstall the filter to the water inlet and reconnect the water supply hose.
6. Clean the Inlet filter every 3 months to ensure the normal operation of the appliance.



### CLEANING THE DETERGENT DISPENSER

1. Press down the release button on the softener cover and pull the dispenser drawer out of the recess.
2. Rinse the inside of the dispenser drawer and the softener cover under water.
3. Clean the inside of the recess with a soft brush.
4. Restore the softener cover and push the drawer back into the recess.



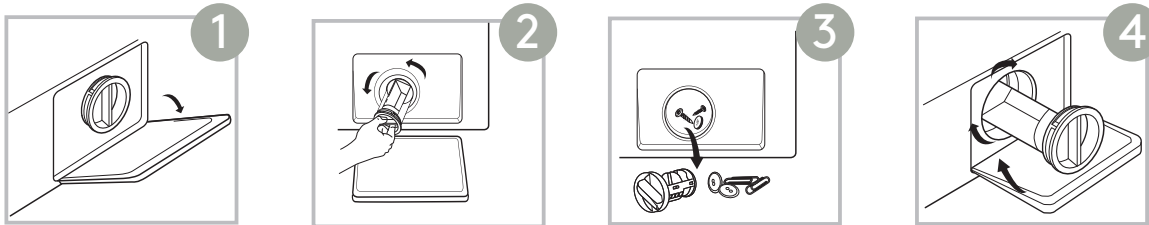
**NOTE!** Do not use abrasive or caustic agents to clean plastic parts.

**NOTE!** Clean the detergent dispenser every 3 months to ensure the normal operation of the appliance.

# Cleaning & Maintenance (Cont.)

## CLEANING THE DRAIN PUMP FILTER

- Make sure that the machine has finished the washing cycle and is empty. Switch it off and unplug it before cleaning the drain pump filter.
  - Be careful of hot water. Allow the water to cool down. Risk of scalding!
  - Clean the filter periodically every 3 months to ensure the normal operation of the appliance.
1. Open the lower cover cap.
  2. Open the filter by turning it counter clockwise. Note, there may be residual water in the unit that releases when the filter is opened. Place a shallow tray or towel underneath to collect the water.
  3. Remove any foreign objects collected in the filter.
  4. Insert the filter back in position and close the cover cap.



**CAUTION!** When the appliance is in use and depending on the cycle selected there may be water in the drain pump. Never remove the drain pump filter during a wash cycle, always wait until the cycle has finished and the machine is empty. When replacing the filter and cover ensure it is securely tightened.

# Technical Specifications

Below outlines the technical specifications for your InAlto Combo Washer Dryer.

Model	IFLW7D40
Size	595W × 565D × 850H (mm)
Net Weight	74kg
Rated Power	2050W
Drying Power	1350W
Washing Capacity	7.0kg
Drying Capacity	4.0kg
Rated Frequency	50Hz
Power Supply	220-240V~,50Hz
Max. Current	10A
Standard Water Pressure	0.05MPa~1MPa

Note: The rated capacity is the maximum capacity to be washed or dried at one time. Make sure that the dry clothes which are loaded into the appliance do not exceed the rated capacity.

## ADDITIONAL INFORMATION FOR STANDARD PERFORMANCE TESTING:

(AS/NZS 2040.1:2005+Amdt1-2007+Amdt2-2009)

1. Water connections: Cold & hot water connection
2. Water supply pressure: 320 kPa
3. Warm wash Program: Cotton Eco, 60°C, Speed 1400rpm, Display: 6:04  
Cold wash program: Cotton Cold( no temperature display is cold wash)
4. Detergent type: Drum detergent
5. Detergent quantity: Default
6. Adding detergent:  
The detergent is dissolved and added as Paragraph B7.3 of AS/NZS 2040.1  
The detergent shall be dissolved in 1 L of water
7. Anti-sudsing agent: Max
8. Test load mass: 7.0kg
9. Water consumption: 71L
10. Test Voltage: 220-240V~,50Hz

# Troubleshooting

## OPERATION IN CASE OF EMERGENCY

In the event of an emergency you should:

- Switch off all controls.
- Switch the appliance off at the power point or at the fuse box.
- Call the Residentia Support Team on 1300 11 HELP (4357).

Some minor faults can be fixed by referring to the instructions given in the Troubleshooting section below. There is also a self-help section online at <https://support.residentia.com.au/>

TROUBLESHOOTING		
DESCRIPTION	POSSIBLE CAUSE	SOLUTION
Appliance does not start	Door is not closed properly. Clothes are stuck.	Close the door properly and restart. Check the laundry.
Door can't be opened	Safety protection is activated.	Disconnect the power and restart.
Water leakage	Connections are not tight enough.	Check and fasten the water inlet pipe. Check and clean the outlet hose.
Detergent residues in the detergent dispenser	Detergent is damp and/or clotted.	Clean and wipe the detergent dispenser dry.
Indicator or display does not work	PC board or harness have connection problems.	Switch off the power and check if the mains plug is connected properly.
Abnormal noise	Transport bolts still in place. Floor is not solid or level.	Check if the transport bolts have been removed. Make sure the appliance is installed on a solid and level floor.
ERROR CODES		
DESCRIPTION	POSSIBLE CAUSE	SOLUTION
E30	Door is not closed properly.	Close the door properly and restart.
E10	Water injecting problem during wash cycle.	Check if the water pressure is high enough. Straighten the water pipe. Clean the inlet valve filter.
E21	Overtime water draining.	Check the drain hose for blockage.
E12	Water overflow.	Restart the appliance.
EXX	Others.	Restart the appliance. If problem persists, please contact the customer service.

---

## **CUSTOMER SERVICE**

Spare part for your appliance are available for a minimum of 10 years.

In case of questions please contact the Residentia Group Support Team on 1300 11 HELP (4357)

### **WARNING! Risk of electric shock**

- Never try repair an appliance which is defective or presumed to be defective. You may put your own and future users' lives in danger. Only authorised specialists are allowed to carry out this repair work.
- Improper repair will void the warranty and subsequent damages can't be recognised!

## **TRANSPORT**

### **IMPORTANT STEPS WHEN MOVING THE APPLIANCE**

- Unplug the appliance and close the water inlet tap.
- Check, if the door and the detergent dispenser are closed properly.
- Remove the water inlet pipe and the outlet hose from the house installations.
- Let the water drain completely from the appliance (see "Maintenance Cleaning the drain pump filter")
- Important: Re-install the 4 transport bolts in the back of the appliance.
- This appliance is heavy. Transport with care. Never hold any protruding part of the machine when lifting. The machine door cannot be used as a handle.

# Purchase Details

---

For future reference, please record the following information which can be found on the rating plate and the date of purchase which can be found on your sales invoice.

---

## STORE DETAILS

STORE NAME | \_\_\_\_\_

ADDRESS | \_\_\_\_\_

TELEPHONE | \_\_\_\_\_

PURCHASE DATE | \_\_\_\_\_

---

## PRODUCT DETAILS

MODEL NO. | \_\_\_\_\_

SERIAL NO.\* | \_\_\_\_\_

Attach your receipt to this page

---



# Warranty Information

## AUSTRALIAN WARRANTY TERMS & CONDITIONS LAUNDRY APPLIANCES

This document sets out the terms and conditions of the product warranties for Residentia Group Appliances. It is an important document. Please keep it with your proof of purchase documents in a safe place for future reference should you require service for your Appliance.

### 1. IN THIS WARRANTY

- (a) 'acceptable quality' as referred to in clause 10 of this warranty has the same meaning referred to in the ACL;
  - (b) 'ACL' means Trade Practices Amendment (Australian Consumer Law) Act (No.2) 2010;
  - (c) 'Appliance' means any Residentia Group product purchased by you accompanied by this document;
  - (d) 'ASR' means Residentia Group authorised service representative;
  - (e) 'Residentia Group' means Residentia Group Pty Ltd of 165 Barkly Avenue Burnley VIC, ACN 600 546 656 in respect of Appliances purchased in Australia;
  - (f) 'major failure' as referred to in clause 10 of this warranty has the same meaning referred to in the ACL and includes a situation when an Appliance cannot be repaired or it is uneconomic for Residentia Group, at its discretion, to repair an Appliance during the Warranty Period;
  - (g) 'Warranty Period' means:
    - (i) where the Appliance is used for personal, domestic or household use (i.e. normal single family use) as set out in the instruction manual, the Appliance is warranted against manufacturing defects for 24 months (or 36 months where a valid extended warranty registration has occurred), following the date of original purchase of the Appliance;
    - (h) 'you' means the purchaser of the Appliance not having purchased the Appliance for re-sale, and 'your' has a corresponding meaning.
2. This warranty only applies to Appliances purchased and used in Australia and is in addition to (and does not exclude, restrict, or modify in any way) any non-excludable statutory warranties in Australia.
  3. During the Warranty Period Residentia Group or its ASR will, at no extra charge if your Appliance is readily accessible for service, without special equipment and subject to these terms and conditions, repair or replace any parts which it considers to be defective. Residentia Group or its ASR may use remanufactured parts to repair your Appliance. You agree that any replaced Appliances or parts become the property of Residentia Group. This warranty does not apply to light globes, batteries, filters or similar perishable parts.
  4. Parts and Appliances not supplied by Residentia Group are not covered by this warranty.
  5. You will bear the cost of transportation, travel and delivery of the Appliance to and from Residentia Group or its ASR. If you reside outside of the service area, you will bear the cost of:
    - (a) travel of an authorised representative;
    - (b) transportation and delivery of the Appliance to and from Residentia Group or its ASR, in all instances, unless the Appliance is transported by Residentia Group or its ASR, the Appliance is transported at the owner's cost and risk while in transit to and from Residentia Group or its ASR.
  6. Proof of purchase is required before you can make a claim under this warranty.
  7. You may not make a claim under this warranty unless the defect claimed is due to faulty or defective parts or workmanship. Residentia Group is not liable in the following situations (which are not exhaustive):



- 
- (a) the Appliance is damaged by:
- (i) accident
  - (ii) misuse or abuse, including failure to properly maintain or service
  - (iii) normal wear and tear
  - (iv) power surges, electrical storm damage or incorrect power supply
  - (v) incomplete or improper installation
  - (vi) incorrect, improper or inappropriate operation
  - (vii) insect or vermin infestation
  - (viii) failure to comply with any additional instructions supplied with the Appliance;
- (b) the Appliance is modified without authority from Residentia Group in writing;
- (c) the Appliance's serial number or warranty seal has been removed or defaced;
- (d) the Appliance was serviced or repaired by anyone other than Residentia Group, an authorised repairer or ASR.
8. This warranty, the contract to which it relates and the relationship between you and Residentia Group are governed by the law applicable where the Appliance was purchased.
9. To the extent permitted by law, Residentia Group excludes all warranties and liabilities (other than as contained in this document) including liability for any loss or damage whether direct or indirect arising from your purchase, use or non use of the Appliance.
10. For Appliances and services provided by Residentia Group in Australia, the Appliances come with a guarantee by Residentia Group that cannot be excluded under the Australian Consumer Law. You are entitled to a replacement or refund for a major failure and for compensation for any other reasonably foreseeable loss or damage. You are also entitled to have the Appliance repaired or replaced

if the Appliance fails to be of acceptable quality and the failure does not amount to a major failure. The benefits to you given by this warranty are in addition to your other rights and remedies under a law in relation to the Appliances or services to which the warranty relates.

11. At all times during the Warranty Period, Residentia Group shall, at its discretion, determine whether repair, replacement or refund will apply if an Appliance has a valid warranty claim applicable to it.
12. Missing parts are not covered by warranty. Residentia Group reserves the right to assess each request for missing parts in a case by case basis. Any parts that are not reported missing in the first week after purchase will not provide free of charge.
13. To enquire about claiming under this warranty, please follow these steps:
- (a) carefully check the operating instructions, user manual and the terms of this warranty;
  - (b) have the model and serial number of the Appliance available;
  - (c) have the proof of purchase (e.g. an invoice) available;
  - (d) telephone the numbers shown below.
14. You accept that if you make a warranty claim, Residentia Group and its ASR may exchange information in relation to you to enable Residentia Group to meet its obligations under this warranty.

#### **IMPORTANT**

Before calling for service, please ensure that the steps in point 13 have been followed.

#### Telephone contact

- Service: Please call 1300 11 HELP (4357)

---

#### **The Australian Consumer Law requires the inclusion of the following statement with this warranty:**

Our goods come with guarantees that cannot be excluded under the Australian Consumer Law. You are entitled to a replacement or refund for a major failure and for compensation for any other reasonably foreseeable loss or damage. You are also entitled to have the goods repaired or replaced if the goods fail to be of acceptable quality and the failure does not amount to a major failure.

# Warranty Information (Cont.)

## NEW ZEALAND WARRANTY TERMS & CONDITIONS LAUNDRY APPLIANCES

To help care for your investment, be sure to register your appliance online. Registration will help you if you need to arrange service in the future, and serves as a record of your purchase – including critical information like model number and serial number – that you can refer to at any time.

Simply visit the below website, or ask your retailer for help: [www.inalto.house/nz/registration](http://www.inalto.house/nz/registration)

### WARRANTY:

These products are covered by a warranty for a period of 24 months from the date of purchase, subject to the following conditions\*. The warranty covers rectification free of charge of any fault arising from defective materials or components, or faulty workmanship or assembly.

\* The conditions above mentioned are:

1. That the purchaser carefully follows all instructions packed with the product;
2. That the purchaser and/or installer carefully follows the installation instructions provided and complies with electrical wiring regulations, gas and/or plumbing codes;
3. That the purchaser carefully follows instructions provided in the owner's handbook relating to the proper use and care of the product and does not use the product for any purpose other than the domestic use for which it has been designed;
4. Commercial use of the product for professional or industrial purposes will void this warranty.;
5. That the product was purchased and installed in New Zealand;
6. That this warranty does not extend to:
  - a) optional glass lids for hobs apart from claims which relate to mechanical or physical damage thereof at the date of purchase;
  - b) 'consumable' parts such as light bulbs or filters;
  - c) damage to ceramic glass caused by liquid or solid spill-overs, lack of maintenance, or impact;
  - d) damage to surface coatings caused by cleaning or maintenance using products not recommended by the owner's handbook;
  - e) defects caused by normal wear and tear, accident, negligence, alteration, misuse or incorrect installations;
  - f) a product dismantled, repaired or serviced by any serviceman other than an authorised service agent;

- g) a product not in possession of the original purchaser;
  - h) damage caused by power outages or surges
  - i) damage caused by pests (eg. rats, cockroaches etc.)
7. That if the product is a freestanding microwave oven or small appliance it must be returned to the dealer/retailer for servicing. These products, unless stated otherwise, have a 12 month warranty from original date of purchase with 24 months on the microwave magnetron; Waste disposers have a 12 month warranty.
  8. The provision of service under this warranty is limited by a 25km boundary from the retailer where the product was purchased except for microwaves. Such travelling outside of these limits will incur commercial cost to be paid by you, regulated by the number of kilometres travelled beyond the 25km limit (50km return trip). Microwaves are to be delivered to the nearest authorised service agent by the customer.

Please refer to your user manual for any further conditions that may apply to your specific model.

Nothing herein contained shall be construed in any way as excluding or limiting your rights under the Consumer Guarantees Acts 1993.

For Service please visit [www.applico.co.nz/service](http://www.applico.co.nz/service) or contact the dealer/retailer from whom you purchased the product from or call the 0800 number listed below. If you are unable to establish the date of purchase, or the fault is not covered by this warranty, or if the product is found to be in working order, you will be required to bear all service call charges.

Registration of this warranty constitutes acceptance of the terms and conditions of this warranty.

Should you require any assistance, please call Customer Services on 0800 763 448.

Distributed by Applico Ltd.  
[www.applico.co.nz](http://www.applico.co.nz)  
July 2019

After registering your appliance online, we recommend you fill out the below information for your reference and keep this warranty card in a safe place.

**THIS WARRANTY IS VALID IN NEW ZEALAND ONLY.**

THIS PAGE IS INTENTIONALLY LEFT BLANK

DESIGNED IN MELBOURNE

# INALTO

FOR ALL AUSTRALIAN HOMES

---

[WWW.INALTO.HOUSE](http://WWW.INALTO.HOUSE)

---



E2447